



IM INTERLOCKING MANIFOLD SIL4 FOR HIPPS SYSTEMS



AVAILABLE CONFIGURATION

IM

INTERLOCKING MANIFOLD SIL4 FOR HIPPS SYSTEMS



CONNECTIONS

Threaded (ASME B1.20.1)
Flanged (ASME B16.5)

RATING

6.000 (420 bar)
10.000 (690 bar)

BORE

8 mm
10 mm

SEALS

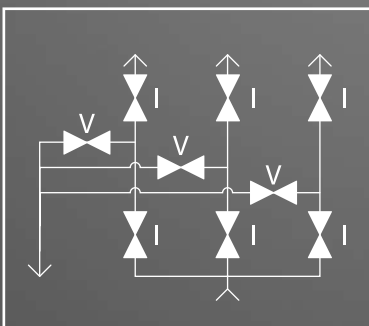
Standard: PTFE
Optional: Graphite

CERTIFICATIONS

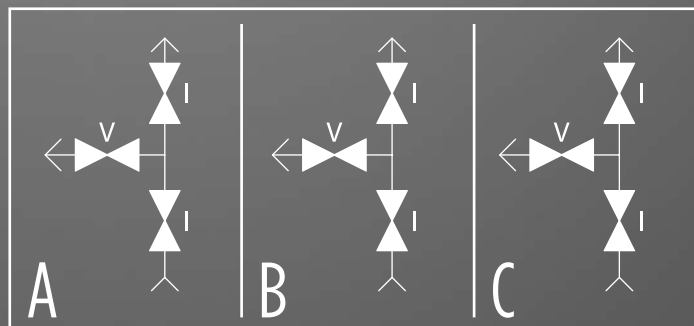
SIL 4 - IEC 61508
PED 2014/68/EU
ATEX 2014/34/EU
Fugitive Emission 15848-1 & 2

1P66 (with box)
CRN for Canada
CU-TR for EAC Countries

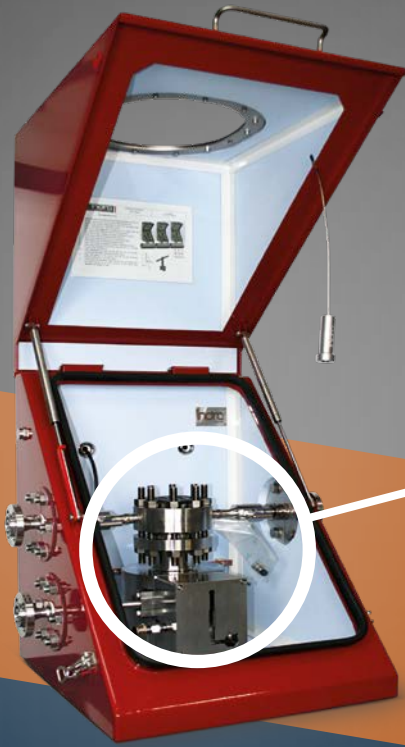
Mod. 2003 / DBB / Flow Diagram



3x1001 (equivalent to 2003) / DBB / Flow Diagram



TAILOR MADE



NMGL PROJECT Abu Dhabi

1001 configuration equipped with a flushing system with external flanged connections and lateral needle valves. Vent piping for lethal fluids equipped with welded external flange. Pressure transmitter not assembled.

QUILUMA PROJECT Angola

2003 configuration with 3 flanged output connections and flushing ring provided between the Pressure Transmitter and the transbar, equipped with two 1/2" NPT-F connections. Pressure transmitter not assembled.



BELBAZEM PROJECT Abu Dhabi

1001 configuration equipped with a flushing system with lateral needle valves and tubing outlet towards external flanges fixed to the enclosure. Vent tubing with 1/2" NPT-F connection.



ENCLOSURE ON DEMAND

ST.ST. 316/316L ENCLOSURE, IP66 STANDARD CONFIGURATION

The interlocking manifold, if required, can be supplied in a standard protective enclosure suitable for applications in extreme environments (tropical, pluvial and polar) in order to guarantee the protection of the instrumentation from external atmospheric events and possible tampering.



TAILOR MADE

Depending on the application and/or dimensions required, the protective enclosure can be sized according to the needs of the project while maintaining the same characteristics as the standard enclosure.



Junction box for proximity switches wiring,

St.St. 316/316L, available Ex-ia or Ex-e certified. Possibility of providing additional junction boxes mounted on the enclosure.



Proximity switches,

St.St.316/316L, available Ex-ia or Ex-d certified.



Cable glands

available in St.St.316/316L or NPB, Dual certification Ex-d/e



Self regulating space heater,

SSt.St.316/316L, Ex-d certificate for special applications Low Temperature Alarm for temperature monitoring and in-line thermostat also available.

COMPANY



Set up in 1987, located in Italy, near Milan, Indra Srl is a 100% Italian manufacturer of valves, mainly ball and needle valves in various configurations and diameters, from the integral monobloc versions, double block & bleed and split body, to instrumentation manifold. Core business products are DBB & SBB, high pressure and cryogenic valves. Characteristics of the company are the “made in Italy” production and a “Tailor made” approach.

All production phases, from engineering, mechanical processing and testing, are carried out in-house, with a high level of control over all phases, which allows us a very rigorous level of quality of our products. Our products are widely used in the oil & gas, petrochemical, offshore platforms, hydrogen and LNG sectors, used as components of plants and machinery with very high value and technological content.

37
Years of activity

150.000
Total valves produced

80
Employees

400
Projects acquired in recent years



HIPPS SYSTEM

A HIPPS is an Safety Instrumented System (SIS) used in the process industry to prevent the line from possible overpressures. HIPPS promptly isolates the line through electrical devices that interact with the systems. It is a fully automated system capable of mitigating damage caused by events that cannot be managed by the normal operation or wrong action of the operator.



INITIATORS – PT
(Pressure Transmitters)

LOGIC SOLVER

FINAL ELEMENTS – ESV
(Emergency Shut-off Valves)

ACTUATORS
(Fast Closing)

INTERLOCKING MANIFOLD SIL4 - 2003